

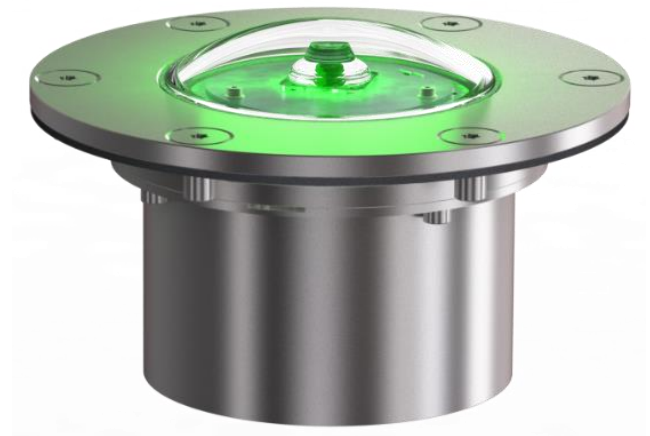
Datasheet - DEL-C H20035

Doc.-no.: H20035-70-DEL-C_Datasheet



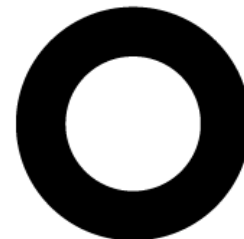
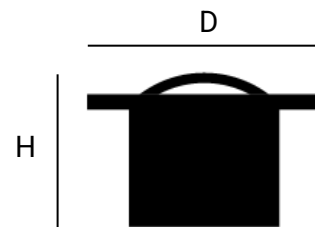
DECK EDGE LIGHT - CONVEX

- Designed to illuminate the landing deck area
- Almost deck even integration for an obstacle-free deck
- Provides light from abt. 0° (horizontal) upwards
- Array of sensors offers health monitoring
- Dimmable in over 65 000 steps
- NVG friendly Stage II HOSTAC / STANAG 1445
- Designed for performance



PRODUCT SPECIFICATION

Supply voltage	48 V DC
Power	5.7 W
Ambient temperature	-32°C to 49°C
Ingress protection level	IP66/67
Dimensions (D x H)	Ø 156 x 124 mm
Weight	2.52 kg
Surface colour	Blank steel
Housing material	Seawater resistant stainless steel
Top glass material	Soda lime glass
Luminous range	3 NM
Light source	LED
Light colours	Green; Amber; White
Luminous intensity	Green: 63 cd; Amber: 25 cd; White 150 cd
Shock	Acc. BV 0230 class B calculated 296 G
Vibration	Acc. MIL-STD-810H
EMC	Acc. MIL-STD-461G
ANVIS compatibility	NVG friendly Stage II HOSTAC / STANAG 1445 (Green & Amber)

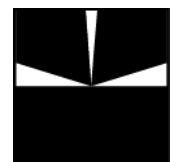


APPLICATIONS

ON-Part No.	Light colour	Connector Gland
H20035-00-001	Amber	Cable Gland (Wiska EMSK-V)
H20035-00-002	Amber	M12 Connector
H20035-00-003	Green	Cable Gland (Wiska EMSK-V)
H20035-00-004	Green	M12 Connector
H20035-00-005	White	Cable Gland (Wiska EMSK-V)
H20035-00-006	White	M12 Connector



Horizontal
FWHM
360°



Vertical
0° - 20°, 90°