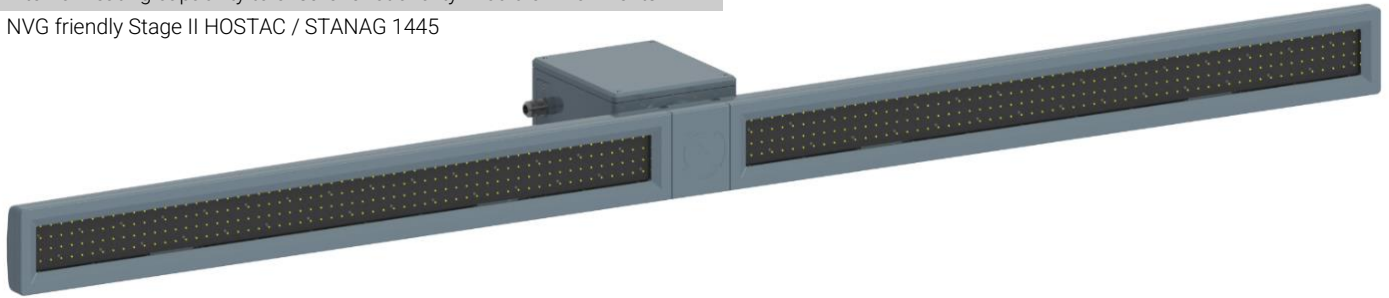


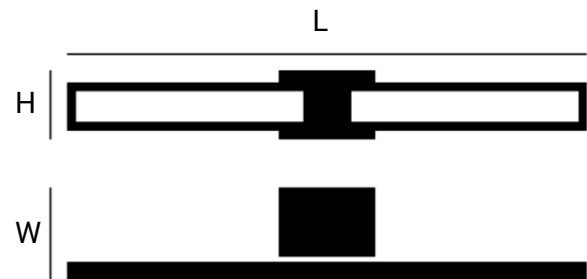
## HORIZON REFERENCE BAR

- Central component of Horizontal Reference System
- Stabilized to a <math><1^\circ</math> reference to the true horizon  $\pm 20^\circ$  or  $\pm 30^\circ$  roll motion\*
- Dimmable in over 65 000 steps
- Offers different connector glands to fit your specific need\*
- Internal heating capability to ensure functionality in cold environments
- NVG friendly Stage II HOSTAC / STANAG 1445



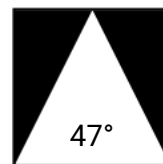
## PRODUCT SPECIFICATION

Supply voltage	48 V DC
Power	Rated: 100 W ( $>0^\circ\text{C}$ ) Max: 300 W ( $<0^\circ\text{C}$ )
Ambient temperature	$-32^\circ\text{C}$ to $49^\circ\text{C}$
Ingress protection level*	IP44 or IP66
Dimensions (L x W x H)	2620 x 363 x 188 mm
Weight	53 kg
Colour*	RAL 7000 (depicted), RAL 7040 or RAL Classic
Surface coating	Anodized & powder coated
Housing material	Seawater resistant aluminum alloy
Front glass material	Laminated safety glass
Luminous range	5 NM
Light source	LED
Light colours*	Green or Amber
Luminous Intensity*	620 cd to 1570 cd
Shock	BV0230 class B calculated: 265 G in z-axis, 174 G in x- & y-axis
Vibration	Acc. to MIL-STD-810H
EMC*	Acc. to MIL-STD-461G
ANVIS compatible	NVG friendly Stage II HOSTAC / STANAG 1445



## APPLICATIONS

ON-Part No.	Light colour	Cable Connector
H20002-00-005	Amber	Cable Gland (Wiska EMSK-V)
H20002-00-008	Amber	Cable Gland (Wiska EMSK-V)
H20002-00-009	Amber	Cable Gland (Wiska EMSK-V)
H20002-00-010	Amber	Cable Gland (VG 88773)
H20002-00-012	Green	Cable Gland (VG 88773)
H20002-00-013	Green	Cable Gland (VG 88773)
H20002-00-015	Amber	Cable Gland (VG 88773)



Horizontal  
FWHM\*



Vertical  
FWHM\*

\*Variant specific

Product and image may vary slightly depending on the specific use case, installation environment, and colour choices.

Revision 1.0 | 13.09.2024 | Author: CHE | Checked: MKO  
Optonaval GmbH | Stenzelring 18 | 21107 Hamburg - Germany  
Phone: +49 40 6094490-0 | E-Mail: info@optonaval.de

© Optonaval GmbH  
www.optonaval.de