

Overhead Flood Light

Product OFL H20017-00-004



The Overhead Flood Light (OFL) provides generous lighting to the flight deck area with a luminous flux of approx. 20,000 lumen of steady white light. It has a compact housing with optional shaders for glare reduction. The OFL is customizable in colours and beam angles, to be combined in multiple modules to fulfil a variety of demands. The housing can be adjusted to six different beam angle characteristics (10°, 0°, -10°, -20°, -30°, -40°). Multiple units with varying beam positions can be mounted on top of each other in a tilted position as to evenly flood large flight decks in the near and far part of the deck. Further on, different colours can be combined in one unit to switch between various operational modes in naval operations, e.g. from white to green for Night Vision Goggle (NVG) mode acc. STANAG 1445/Stage 2.

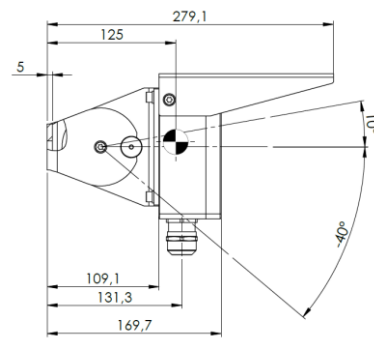
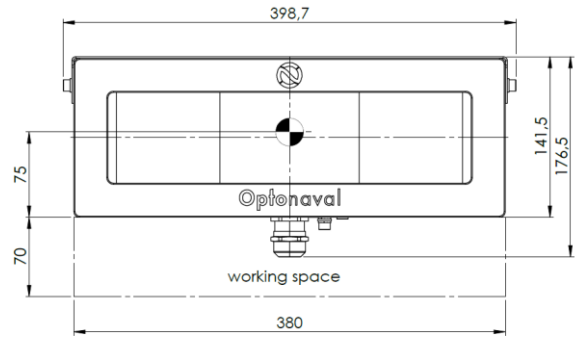
The OFL has a low and compact housing made of massive seawater resistant aluminium, designed for performance in extreme marine environments. The light intensity can be dimmed in 65K steps, configured in eight or more user defined levels via the control system.

System integrity and operational reliability is monitored by multiple sensors measuring temperature, humidity, and electric current. These internal electronics provide constant monitoring of the OFL status and ensure that degradations and failures can be detected generally before such event.

Benefit of the electronic features is granted in combination with Optonaval's software suite Albatross, starting with the module AlbaNavy. Please refer to the relevant Software Documentation.

PRODUCT SPECIFICATION

ELECTRICAL SPECIFICATION	
Supply voltage	48 V DC
Power	See application table
OPERATING CONDITIONS	
Ambient temperature	-32°C to 49°C
Ingress protection level	IP66
Shock	acc. to MIL-STD-810H / 10G
Vibration	acc. to MIL-STD-810H
EMC	acc. to MIL-STD-461G
NVIS	acc. to STANAG 1445, Stage 2
MECHANICAL SPECIFICATION	
Dimensions (LxHxD)	398x178x279 mm
Weight	approx. 8,2 kg
Housing colour	RAL 7000, gloss grade 80%
Housing material	sea water resistant aluminium alloy / stainless steel
Surface coating	anodized & powder coated
Front glass material	laminated safety glass
OPTICAL/LIGHT SPECIFICATION	
Light source	LED
Light colours	see application table
Luminous flux	see application table
Beam angle	see application table
CONNECTION & CONTROL SPECIFICATION	
Power supply / Data cable	4*2*0,75 mm ² twisted shielded
Controls	MODBUS RTU
Daisy chain	max 4 in a row



Special FEATURES

✓	Illuminating the complete flight deck area for safe working conditions
✓	Customized light characteristics
✓	Adjustable light angles
✓	Dimming in 65k steps
✓	Suitable for the use of Night Vision Goggles (NVG)
✓	Health monitoring and reporting
✓	Smart weight saving cabling
✓	Integrated in Albatross software suite
✓	Comprehensive service package and ILS support available

VARIANTS & APPLICATIONS

ON Part no.	Product Type – Light Colour	Power & Light Characteristics
H20017-00-004	Floodlight Flightdeck WH	to be provided on request
H20017-00-005	Floodlight Flightdeck GN - WH	to be provided on request