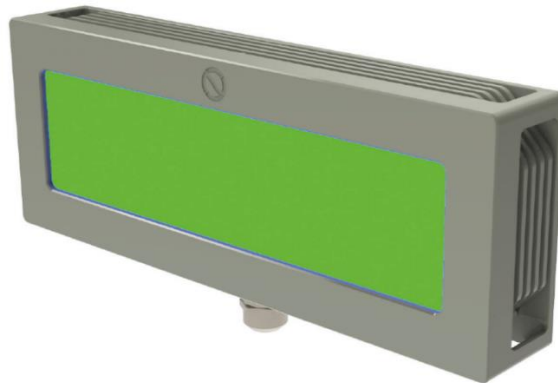


Universal Traffic Light - Rectangular

Product UTL-R H20034-00-00x / Naval Applications



The UTL-R belongs to the family of UTL-matrix lights which can serve as a signal light as well as a reference light. With this variety of applications, common use of UTL-Rs on board reduces spare parts provision and ILS effort.

In its application as twin Horizon Reference Side Light (HRSL) it is part of the Horizon Reference System (HRS) alongside the Horizon Reference Bar (HRB). The HRSLs mark the line parallel to the landing deck, and thus evidencing the ship's roll as difference between the oscillating bar and the fixed HRSL. Further on, the UTL-R can be used as a Deck-Status-Light (DSL). Here it signals to the flight crew whether it is safe to land or take off ("Green Deck") or not ("Red Deck"). The UTL-R may also be used as Hangar Contour Light (HCL), e.g. on the aft corners of the hangar wall facing the flight deck indicating the boundaries of the hangar during night flight.

The universal flat signal light is based on a multi colour LED matrix. The standard UTL-R colour is green to ensure compatibility with NVG mode acc. to STANAG 1445 / stage 2. A radiation screen provides excellent visibility in direct sunlight conditions.

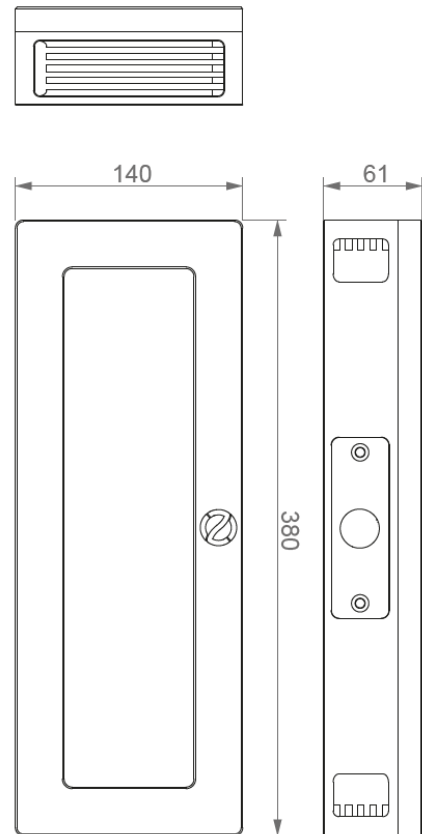
The light has a low and compact housing made of massive seawater resistant aluminium, designed for performance in extreme marine environments. The light intensity can be dimmed in 65K steps, configured in eight or more user defined levels via the control system.

System integrity and operational reliability is monitored by multiple sensors measuring temperature, humidity, and electric current. These internal electronics provide constant monitoring of the UTL-R status and ensure that degradations and failures can be detected generally before such event.

Benefit of the electronic features is granted in combination with Optonaval's software suite Albatross, starting with the module AlbaNavy. Please refer to the relevant Software Documentation.

PRODUCT SPECIFICATION

ELECTRICAL SPECIFICATION	
Supply voltage	48 V DC
Power	see application table
OPERATING CONDITIONS	
Ambient temperature	-32°C to 49°C
Ingress protection level	IP66
Shock	acc. to MIL-STD-810H / 10G
Vibration	acc. to MIL-STD-810H
EMC	acc. to MIL-STD-461G
NVIS	acc. to STANAG 1445, stage 2
MECHANICAL SPECIFICATION	
Dimensions (LxHxD)	380x140x61 mm
Weight	approx. 6,3 kg
Colour	RAL 7000, gloss grade 80%
Housing material	sea water resistant aluminium alloy
Surface coating	anodized & powder coated
Front glass material	mineral glass
OPTICAL/LIGHT SPECIFICATION	
Light source	LED
Light colours	see applications table
Beam angle	FWHM 55°
Beam intensity	see applications table
CONNECTION & CONTROL SPECIFICATION	
Power supply / Data cable	4*2*0,75 mm ² twisted shielded
Controls	MODBUS RTU
Daisy chain	max 4 in a row



SPECIAL FEATURES

✓	Common spare parts with UTL
✓	Reducing ILS effort
✓	Dimming in 65k steps
✓	Suitable for the use of Night Vision Goggles (NVG)
✓	Health monitoring and reporting
✓	Smart weight saving cabling
✓	Integrated in Albatross software suite
✓	Comprehensive service package and ILS support available

VARIANTS & APPLICATIONS

ON-Part-no.	Product Type	Power & Light Intensity
H20034-00-001	380x140x61mm – AM	to be provided on request
H20034-00-002	380x140x61mm – GN	to be provided on request
H20034-00-003	380x140x61mm – GN, RD	to be provided on request
H20034-00-004	380x140x61mm – RD	to be provided on request