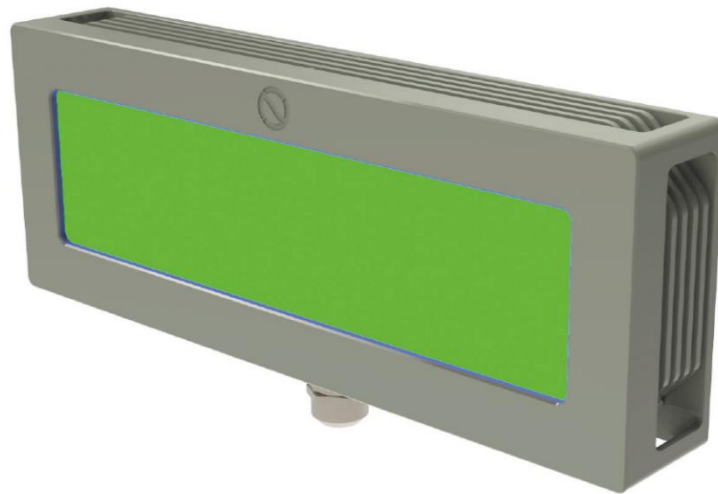


DATASHEET
for
Universal Traffic Light - Rectangular
Product UTL-R H20034 / Naval Applications



Horizon Reference Side Light / Deck Status Light / Hangar Conture Light

The UTL-R belongs to the family of UTL-Matrix lights which can serve as a signal light as well as a reference light.

In its application as twin Horizon Reference Side Light (HRSL) it is part of the Horizontal Reference System (HRS) alongside the Horizon Reference Bar (HRB). The HRSLs mark the zero degree / heeling line and they are rigidly attached to the ship's superstructure.

Further the UTL-R can be used as a Deck-Status-Light (DSL). Here it signals to the flight crew whether it is safe to land or take off ("Green Deck") or not ("Red Deck").

The UTL-R may also be used as Hangar Conture Light (HCL), e.g. on the aft corners of the Hangar wall facing the flight deck to indicate the outlines of the Hangar during night flight.

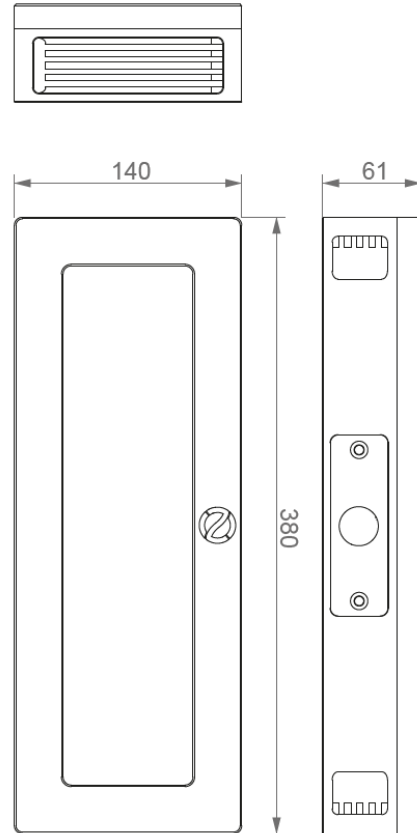
The universal flat signal light is based on an multi color LED matrix. The standard UTL-R color is green to ensure compatibility with NVG mode acc. to STANAG 1445. A radiation screen provides excellent visibility in direct sunlight conditions. The rigid design in massive, seawater resistant aluminum is optimized for performance in extreme marine environments.

System integrity and operational reliability is controlled by Optonaval's internal electronics combining multiple sensors measuring temperature, humidity, and electric current, providing 24/7 monitoring of the UTL-R's status. In that respect, the UTL-R will show an upcoming malfunction before it actually fails.

All data reflect the current state of the technology and should therefore be regarded with reservation.

PRODUCT SPECIFICATION

ELECTRICAL SPECIFICATIONS	
Supply voltage	48 V DC
Power	see applications table
OPERATING CONDITIONS	
Ambient temperature	-25°C to 45°C
Ingress protection level	IP66/67
Shock	acc. to MIL-STD-810G / BV 0230
Vibration	acc. to MIL-STD-810G / BV 0240
EMC	acc. to MIL-STD-461G / VG 95373
NVIS compatible	acc. to MIL-STD-3009 Type II class B
MECHANICAL SPECIFICATIONS	
Dimensions (LxHxD)	380x140x61 mm
Weight	approx. 5 kg
Color	RAL Classic
Housing material	sea water resistant aluminum alloy
Surface coating	anodized & powder coated
Front glass material	Mineral glass
OPTICAL/LIGHT SPECIFICATIONS	
Light source	LED
Light colors	see applications table
Beam angle	120° x 120°
Beam intensity	see applications table
ADDITIONAL DOCUMENTS	
Installation Drawing	H20034-50-001_InstallationDrawing
Installation Manual	H20034-51-001_InstallationManual
Operating Manual	H20034-81-001_OperatingManual
Maintenance Manual	H20034-82-001_MaintenanceManual



APPLICATIONS

ON-Part No.	Product type	P (rated/max)	Specific Information
H20034-00-001	Horizon Reference Side Light – HRSL – 380x140x61mm – CGN, AM	15 W / 30 W	up to 100 cd
H20034-00-001	Hangar Conture Light – HCL – 380x140x61mm – GN, AM	15 W / 30 W	up to 100 cd
H20034-00-001	Deck Status Light – DSL – 380x140x61mm – CGN, RD	15 W / 30 W	up to 100 cd