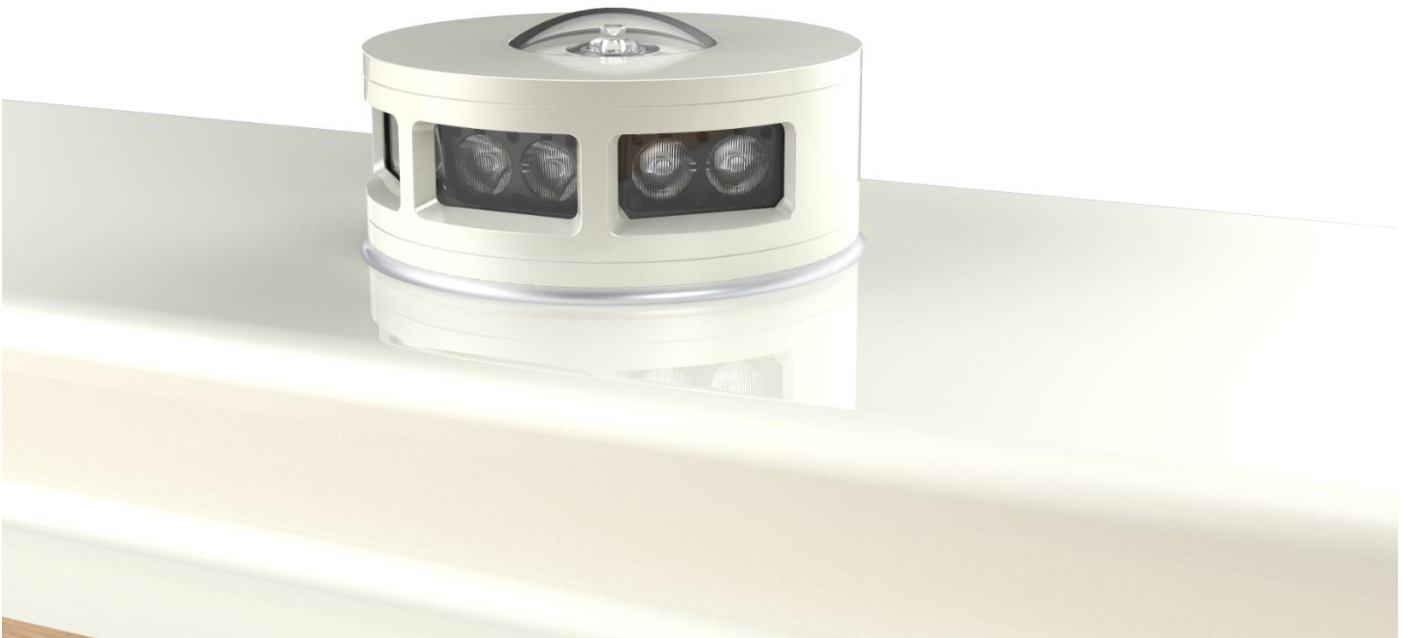


DATASHEET  
for  
**Combined Flood & Deck Edge Light**  
Product CFDEL H20015-00-003 / Yacht Application

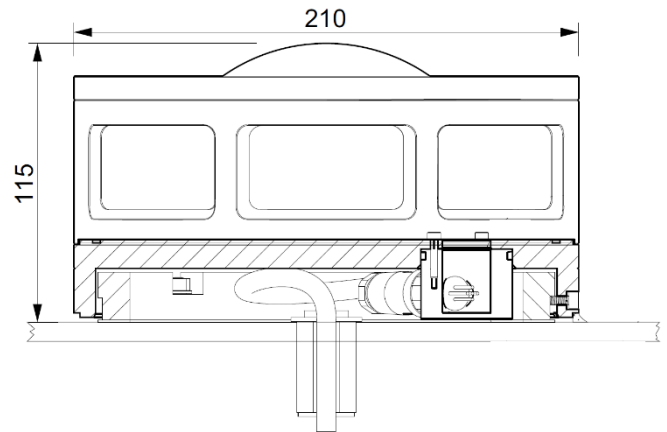


The CFDEL (Combined Flood & Deck Edge Light) is designed to mark the deck's outer limits (perimeter circle) and illuminate the entire flight deck in a way which does not dazzle pilots' vision. It has a low and compact housing profile, which is made of massive seawater resistant aluminum for performance in extreme marine environments.

System integrity and operational reliability is controlled by Optonaval's internal electronics combining multiple sensors measuring temperature, humidity, and electric current, providing 24 / 7 monitoring of the CFDEL's status. In that respect, the CFDEL will show an upcoming malfunction before it fails.

## PRODUCT SPECIFICATION

ELECTRICAL SPECIFICATIONS	
Supply voltage	48 VDC
Power	FDL = 20 W rated DEL = 10 W rated Total max. = 50 W
OPERATING CONDITIONS	
Ambient temperature	-25°C to 45°C
Ingress protection level	IP66/67
Shock	acc. to MIL-STD-810G / BV 0230 (X, Y Axis 25G / Z Axis 45G)
Vibration	acc. to MIL-STD-810G / BV 0240
EMC	acc. to MIL-STD-461G / VG 95373
NVIS compatible	acc. to MIL-STD-3009 Type II class B
MECHANICAL SPECIFICATIONS	
Dimensions	Ø210x100mm
Weight	approx. 4,6 kg
Housing color	RAL Classic
Housing material	sea water resistant aluminum alloy
Surface coating	anodized & powder coated
Top glass material	PMMA
Side glass material	Float glas
OPTICAL/LIGHT SPECIFICATIONS	
Light source	LED
Light colors	FDL = WH; DEL = GN other colors on request
Luminous flux	300 lm
Beam angle	180° vertical / 360° horizontal
Beam intensity	2000 cd
Light intensity profile	CAP 437 / ICAO compliant
ADDITIONAL DOCUMENTS	
Installation Drawing	H20015-50-003_InstallationDrawing
Installation Manual	H20015-51-003_InstallationManual
Operating Manual	H20015-81-003_OperatingManual
Maintenance Manual	H20015-82-003_MaintenanceManual



## APPLICATIONS

ON-part-no.	Product type
H20015-00-003	CFDEL – Yacht Variant