

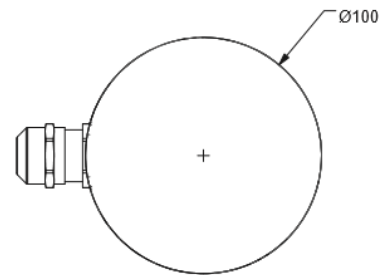
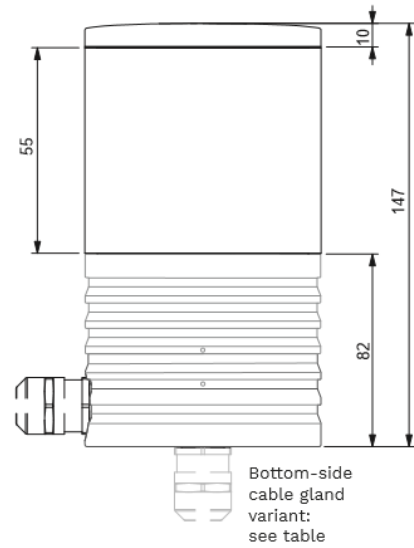
DATASHEET
for
Universal Navigation Light
Product UNL L30001-00-012 / Yacht Applications



Optonaval Universal Navigation Light (UNL) Stop Light is a member of the Optonaval Navigation Light family, a modular platform, based on a universal housing design. The rigid design of the massive seawater resistant aluminum body is optimized for performance in extreme marine environments.

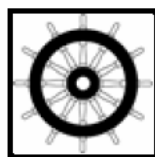
PRODUCT SPECIFICATION

| ELECTRICAL SPECIFICATIONS | |
|------------------------------|---|
| Supply voltage | 24 V DC |
| Power | 9 W rated / 9 W max. |
| OPERATING CONDITIONS | |
| Ambient temperature | -20°C to 50°C |
| Ingress protection level | IP66/67 |
| Shock | acc. to EN 14744 |
| Vibration | acc. to EN 60945 |
| EMC | acc. to EN 60945 |
| Night Vision | compatible |
| MECHANICAL SPECIFICATIONS | |
| Dimensions | Ø100x147 mm |
| Weight | approx. 1,6 kg |
| Housing color | RAL Classic |
| Housing material | sea water resistant aluminum alloy |
| Surface coating | anodized or powder coated (preanodized) |
| Tube material | PMMA |
| BTM cable gland variant | L30001-00-011 |
| OPTICAL/LIGHT SPECIFICATIONS | |
| Light source | LED |
| Light colors | 1x RD |
| Beam angle | 135° horizontal |
| Beam angle vertical | ±7,5° |
| Light Range | 3 NM |
| ADDITIONAL DOCUMENTS | |
| Installation Drawing | L30001-50-001_InstallationDrawing |
| Installation Manual | L30001-51-001_InstallationManual |
| Operating Manual | L30001-81-001_OperatingManual |
| Maintenance Manual | L30001-82-001_MaintenanceManual |



APPLICATIONS

| ON-Part No. | Product type |
|---------------|--|
| L30001-00-012 | UNL - STOP LIGHT - 135° - 3NM - RD - CBL AFT |



Notified Body
No.: **0098**